



COMPOR

MOUNTING SYSTEMS FOR SOLAR PANELS

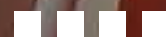
Fiberglass composite

SIA "COMPOR", SALASPILS, LATVIJA

 +371 27822444, +371 29417038

 info@compor.lv

 www.compor.lv





TYPES OF STRUCTURES TO BE EQUIPPED WITH SOLAR PANELS

We live in time of growing need for more efficient use of resources, more sustainable solutions and abandonment of the use of fossil energy resources, allowing to reduce CO2 emissions. The time when Green energy is becoming more and more in demand.

Current technological advancements in energy production enable many households to become more independent from other electricity suppliers. Solar panels are especially in demand, allowing everyone to produce electricity not only for self-consumption, but also for trade.

Especially for this market segment "COMPOR" has developed several solutions that enable the use of solar panels in combination with various types of constructions made of environmentally friendly materials.

Constructions made of fiberglass composite and equipped with solar panels can be divided into four product categories:





COMPOR

ADVANTAGES OF FIBERGLASS COMPOSITE

Long-lasting material



Resistant to UV radiation, wind and precipitation

Light weight



Possibility to install on the ground

No welding required or installation



Easy access in case of repair

Ability to adjust the tilt angle



Fiberglass composite structures are ideal for aggressive environments as they are not subject to corrosion or electro-corrosion risks. That is why they are gaining more and more popularity in railway, port or urban infrastructure objects, as they are able to maintain their mechanical, functional and aesthetic properties for many years.

That is why fiberglass profiles are also ideal for canopies equipped with solar panels - regardless of the type or position of the canopies.



Materiāli

- Fiberglass composite profiles
- Fasteners
- Solar panels



Instrumenti

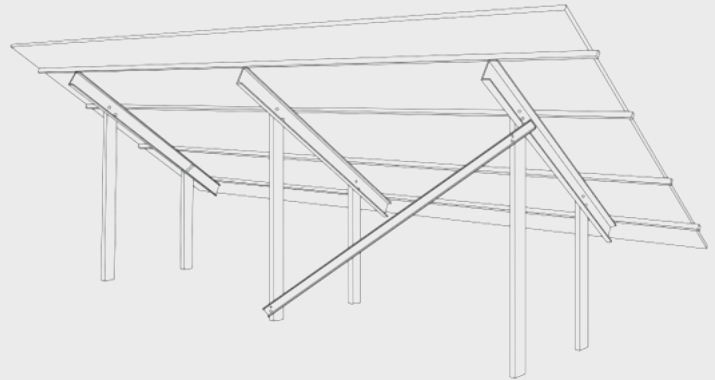
- Measuring tape
- Marker
- Drill
- Circular saw
- Level
- Screwdriver



CONSTRUCTION ON THE GROUND

Workflow:

1. Mark places for racks
2. Connect the posts with an inclined profile and screws
3. Install elements
4. Connect structural elements with longitudinal profiles and joints
5. Attach the solar panels to the longitudinal profile



| Nr. | The name of the structural element | Profile type | Size |
|-----|------------------------------------|----------------------------|--|
| 1. | Pole (with anchor) | Beam or U-beam | 102x51x6,4 mm 100x40x5 mm, 150x50x6 mm |
| 2. | Inclined profile | Beam or U-beam | 102x51x6,4 mm 100x40x5 mm, 150x50x6 mm |
| 3. | Bonds | U-sija | 75x25x5 mm |
| 4. | Longitudinal profile | Square or Special profile* | 44x44x3 mm 40x40 mm |

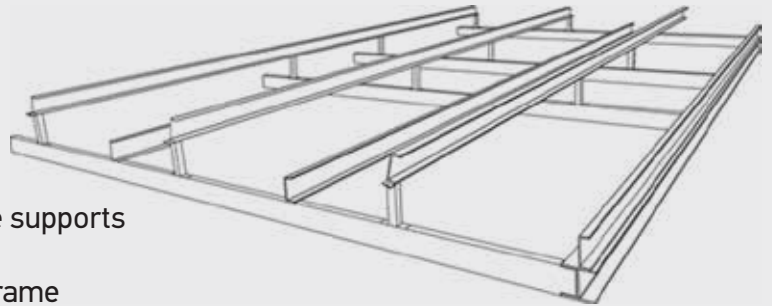
* **Special profile** is designed for fixing solar panels with bolts (see page 7)



CONSTRUCTION ON A FLAT ROOF

Workflow:

1. Mark places of supports
2. Assembly and installation of the frame on the supports
3. Installation of longitudinal elements on the frame
4. Putting a column under an inclined element
5. Installation of an inclined element and, if necessary, a longitudinal profile
6. Fixing solar panels to the longitudinal profile



| Nr. | The name of the structural element | Profile type | Size |
|-----|------------------------------------|-------------------------------|--|
| 1. | Frame | Beam or U-beam | 102x51x6,4 mm 150x150x10 mm 200x200x10 mm 100x40x5 mm, 150x50x6 mm, 200x60x8 mm |
| 2. | Longitudinal element | U-beam | 100x40x5 mm, 150x50x6 mm, 200x60x8 mm |
| 3. | Inclined element | U-beam | 100x40x5 mm, 150x50x6 mm, 200x60x8 mm |
| 4. | Longitudinal profile | Square or Special profile* | 100x40x5 mm, 150x50x6 mm, 200x60x8 mm 40x40 mm |

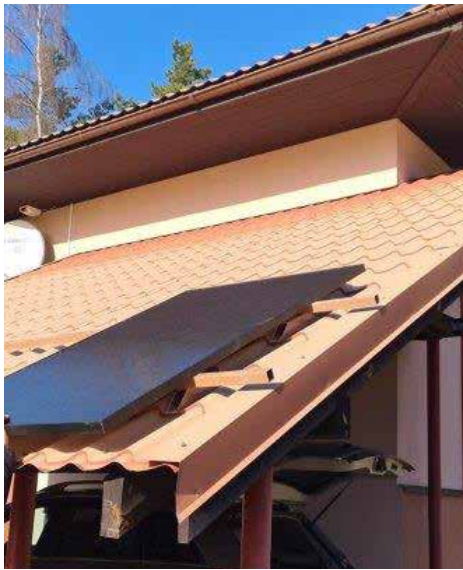
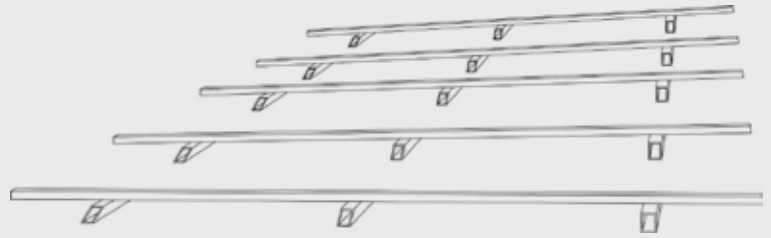
* **Special profile** is designed for fixing solar panels with bolts (see page 7)



CONSTRUCTION ON A PITCHED ROOF

Workflow:

1. Mark the places of supports
2. Installation of the support profile
3. Installation of longitudinal profile
4. Fixing solar panels to the longitudinal profile



| Nr. | The name of the structural element | Profile type | Size |
|-----|------------------------------------|----------------------------|--|
| 1. | Support profile | Square | 37x37x3 mm 44x44x3 mm 44x44x6 mm 50x50x3 mm 50x50x6,4 mm 60x60x4,5 mm |
| 2. | Longitudinal profile | Square or special profile* | 50x50x3 mm 50x50x6,4 mm 60x60x4,5 mm 40x40 mm |

* **Special profile** is designed for fixing solar panels with bolts (see page 7)

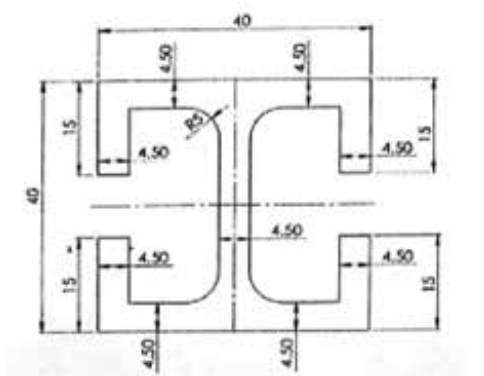


CANOPY CONSTRUCTION

Production:

Canopies are made according to customer's requirements and canopy project specifications.

| Nr. | The name of the structural element | Profile type | Size |
|-----|------------------------------------|-------------------------------|------------------------|
| 1. | Frame | Square | 100x100x4 mm |
| 2. | Support elements | T-section or Special profile* | 50x51x6,4 mm, 40x40 mm |



* **Special profile** is designed for fixing solar panels with bolts.



COMPOR

SIA "COMPOR", SALASPILS, LATVIJA

 +371 27822444, +371 29417038

 info@compor.lv

 www.compor.lv

